The background is a complex, abstract composition of fine, overlapping lines in various colors including purple, blue, green, and yellow. These lines form a dense, web-like pattern that covers the entire frame. Interspersed within this network are larger, more distinct shapes, some of which resemble stylized faces or figures, though they are not clearly defined. The overall effect is one of organic complexity and vibrant energy.

# HARD BODY, SOFT TOUCH

IN COLLABORATION WITH SPECIAL OLYMPICS

AN ONGOING PROJECT BY RENEE XIE

In collaboration with the Special Olympics, I got to work with two amazing athletes. Bridget (left) and Michael (right) were the center of my inspiration. We spent hours together learning about their needs and developing my plan to better serve them.



**Bridget**

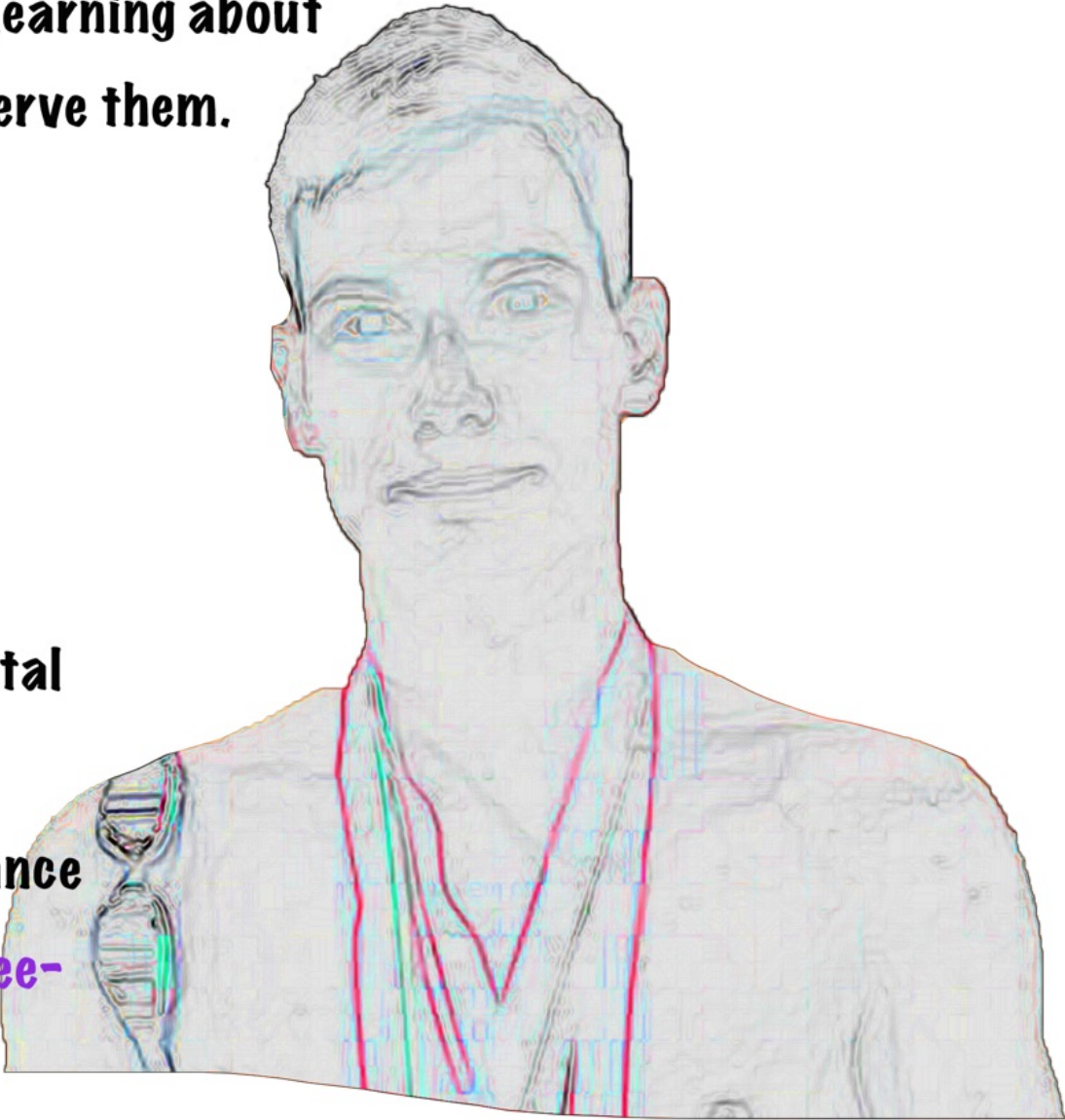
**Favorite Color:** Blue

**Hobbies:**

Loves Finding Dory

Like swimming  
because it feels nice  
to be surrounded by  
water

Enjoys massages  
for muscle recovery



**Michael**

**Favorite Color:**

Purple, Black

**Hobbies:**

Enjoys heavy metal  
and routines

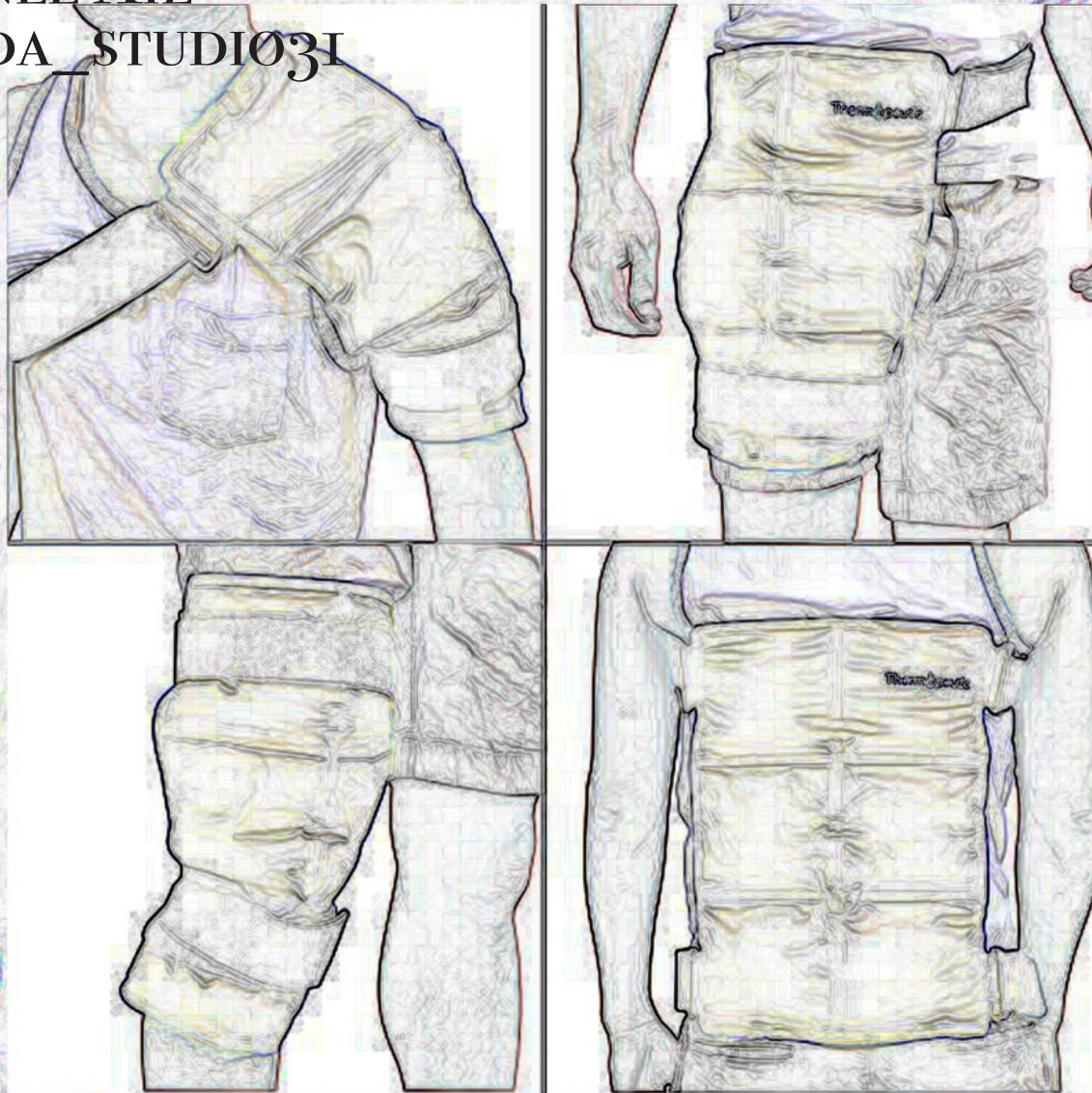
Swims long distance  
butterfly and free-  
style

Likes drinking pro-  
tein shakes and bars  
for recovery

**Special Olympics**



RENEE XIE  
@DA\_STUDIO31



ALSO INCORPORATING ICE AND HEATING  
PADS TO COMPRESSION

CURRENT PRODUCTS ON THE MARKET ARE  
TOO EXPENSIVE, BULKY, UNATTRACTIVE AND  
LACKS CREATIVITY.

MY GOAL IS TO CREATE A NEW COMPRESSION  
WEAR LINE THAT IS FIRST OF ALL FUNCTION-  
AL AND USEFUL TO EVERYONE, BUT ALSO  
CREATIVE AND VISUALLY APPEALING.



## COMPRESSION RECOVERY

INCREASING BLOODFLOW BY  
COMPRESSION MUSCLES TO  
SQUEEZE OUT TOXINS. BY DO-  
ING SO SPEEDS UP RECOVERY  
TIME.

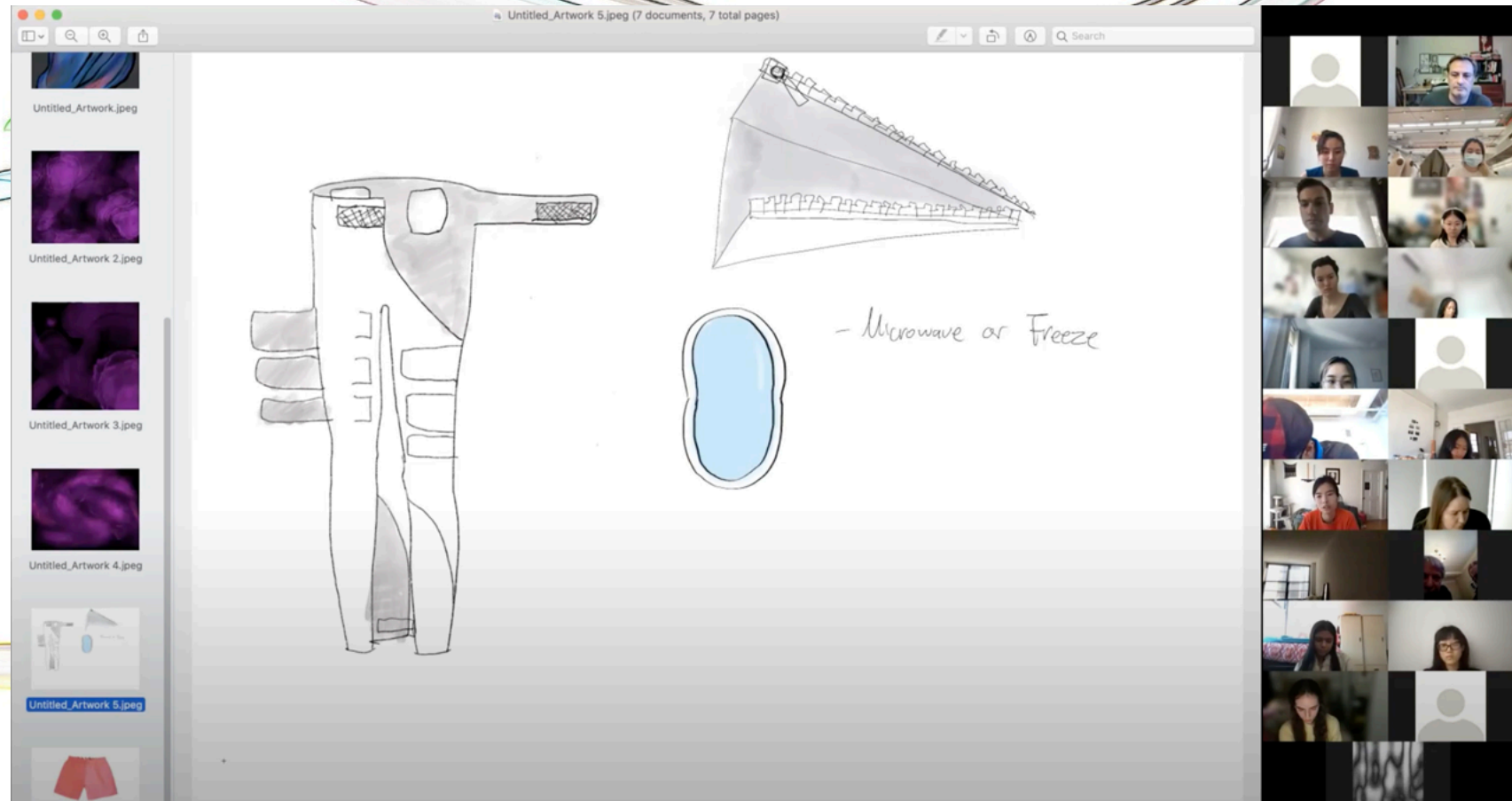


THE  
NEW  
SCHOOL

PARSONS

Special Olympics





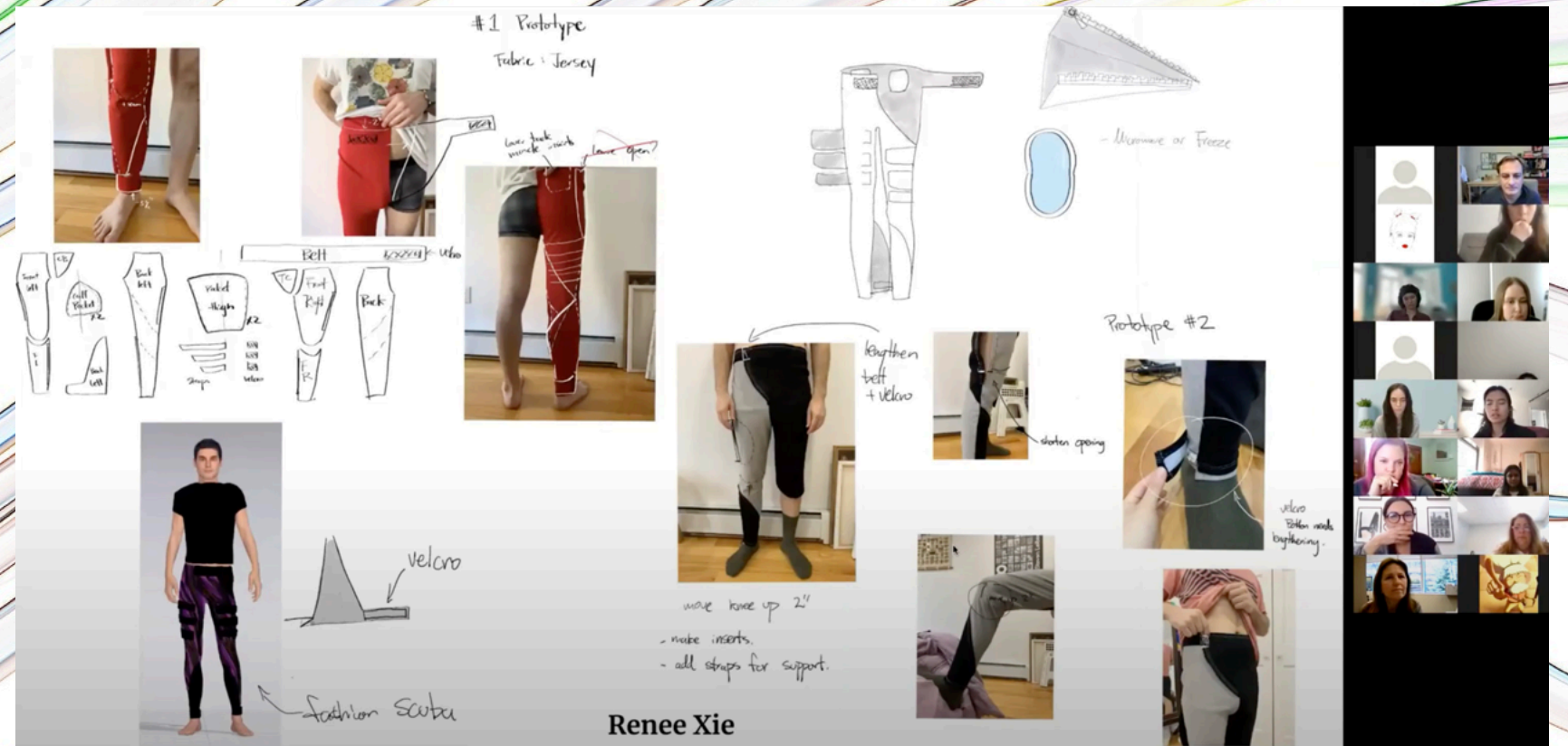
FIRST TIME PRESENTING COMPRESSION RECOVERY IDEA TO THE ATHLETES

MIKE: "I'VE NEVER SEEN ANYTHING LIKE THIS, I'M VERY INTERESTED IN TRYING IT."

BRIDGET: "I WOULD LIKE TO TRY IT AS WELL."

SPECIAL OLYMPIS SWIMMING COACH KARLI: "I THINK THERE IS A STRONG CONNECTION BETWEEN COMPRESSION AND SWIMMERS. SWIMMERS FEEL RELAXED IN THE WATER BECAUSE THEY ARE SURROUNDED BY A BODY OF WATER. THERE'S A THEME OF COMPRESSION AND FEELING COMFORT AND THAT'S WHY THE WATER IS A LOT OF SWIMMER'S SAFE SPACE."

RENEE XIE  
@DA\_STUDIO31



Pouches Heat / Ice



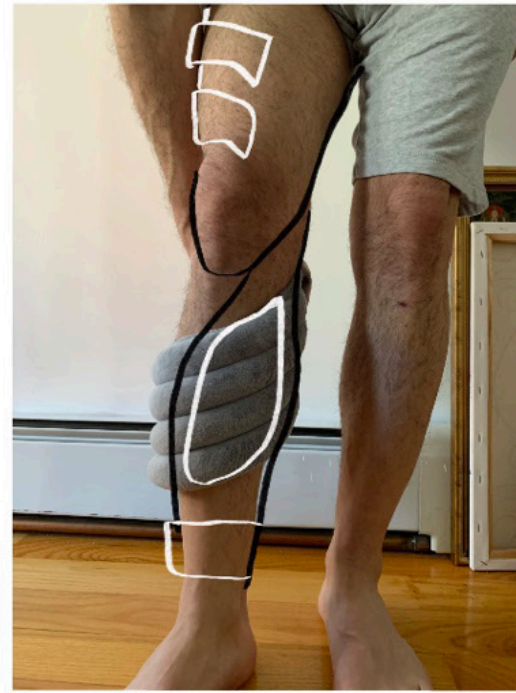
Calf x2



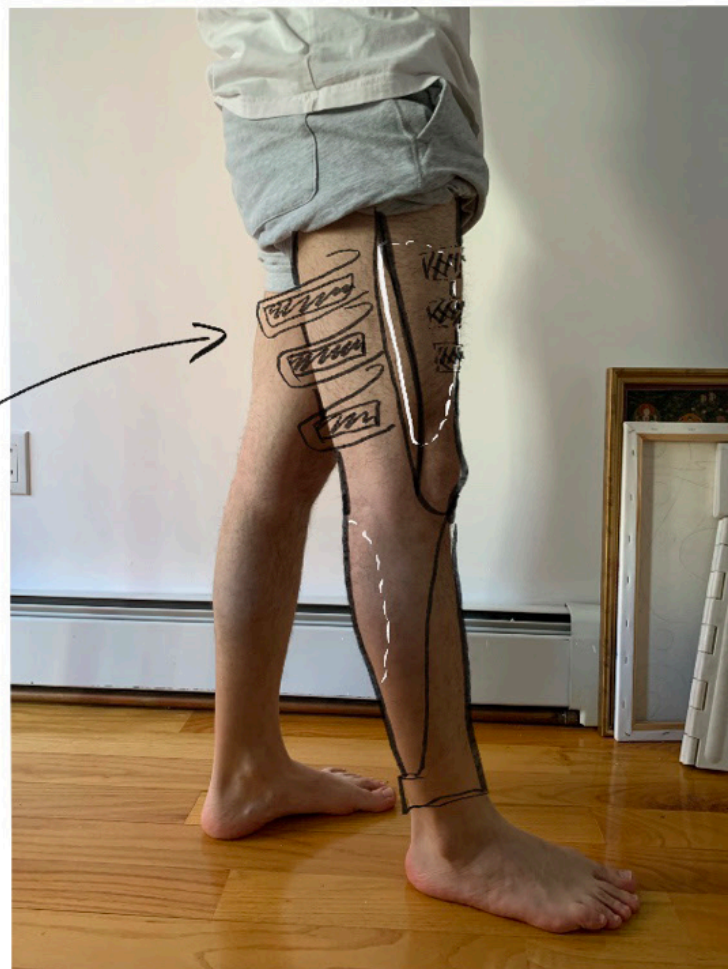
Thigh x2



Material  
Fashion Suba



Velcro



RENEE XIE  
@DA\_STUDIO31

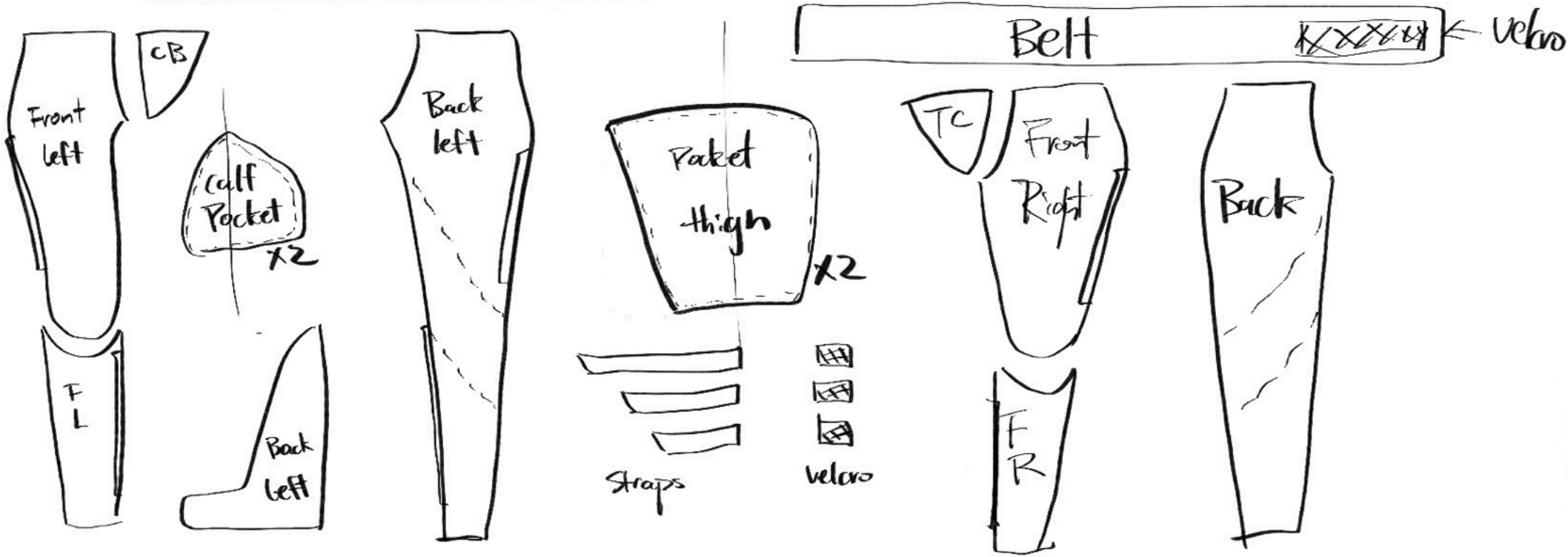
#1 Prototype

Fabric : Jersey



lower back muscle inserts

~~leave open?~~



RENEE XIE  
@DA\_STUDIO31



move knee stretch up 2"



Inserts for lower back

Insert for calf muscle



adjustable length



Bottom velcro needs lengthening



Closure for fastening Insert



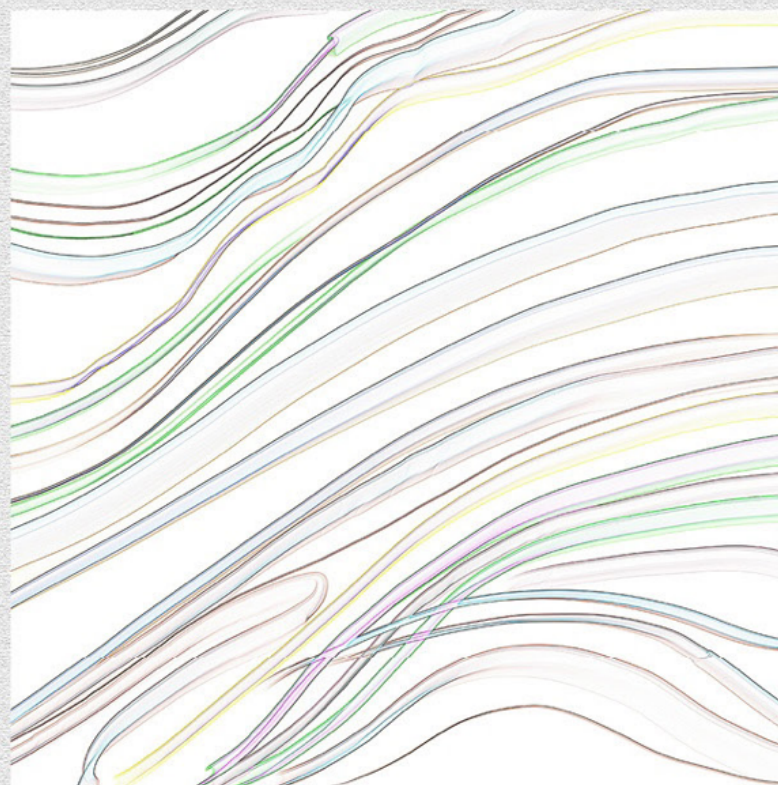
shorten opening for Inserts

I AM DESIGNING MY GARMENTS FOR THE ATHELETES I'M WORKING WITH. THEREFORE, I'M INCORPORATING THEIR FAVORITE COLORS AND DEVELOPING PRINTS FOR PEOPLE WITH INTELLECTUAL DISABILITY TO MAKE THEM FEEL RELAXED. BUT A GOOD DESIGN BENIFITS EVERYONE, NOT JUST FOR PEOPLE WITH DISABILITIES.

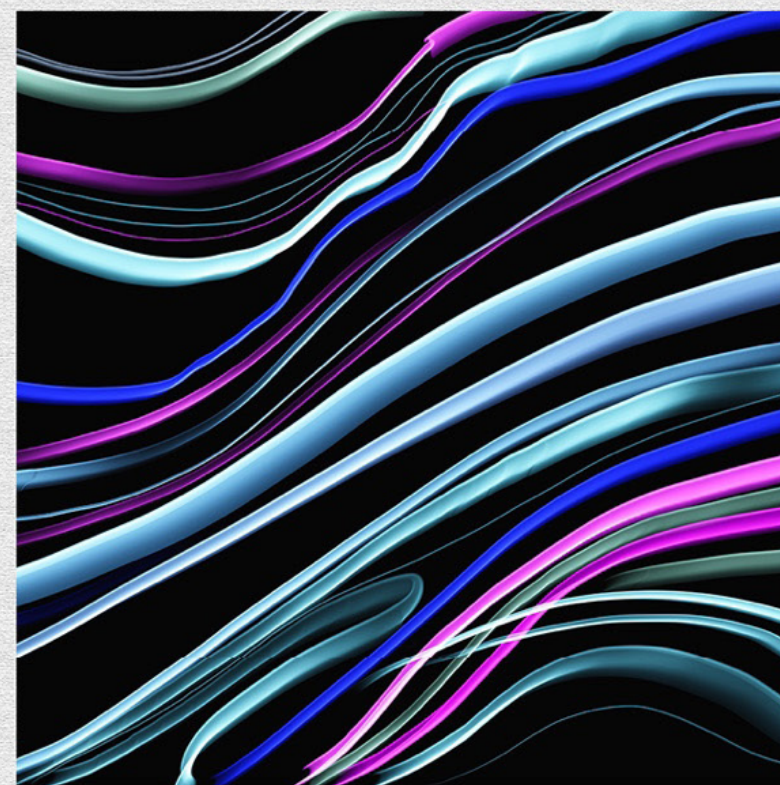
# Print Development



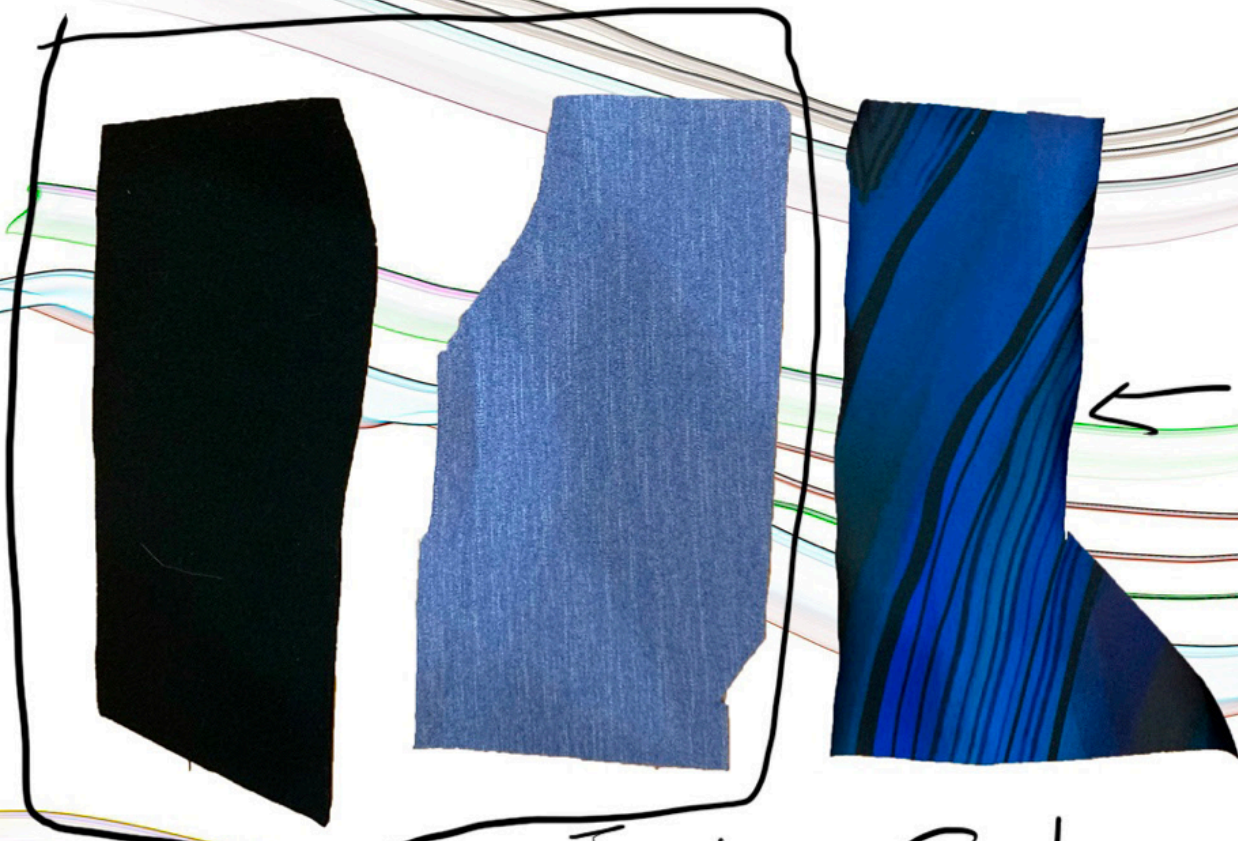
PHASE 1



PHASE 2



PHASE 3



4way stretch  
fast drying

← Sports Lycra  
custom print

→ Fashion Scruba

Print Development

John Franzen  
"One Breath  
One Line"

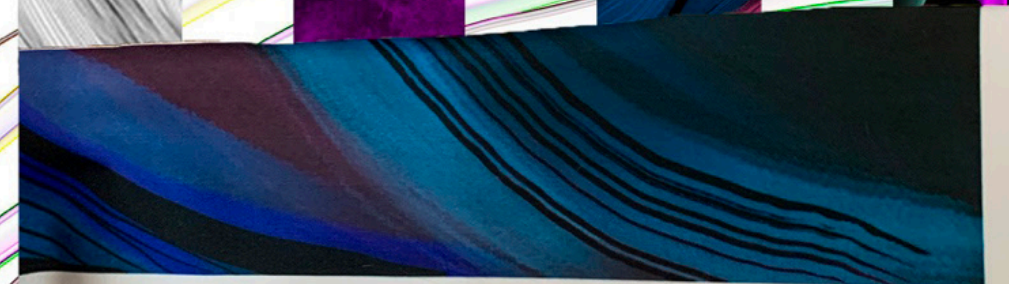
Adding athletes'  
favorite colors



Double Jersey



Double fusible to  
combine Two fabrics



Designed by:  
denina0131  
Custom printed on  
Sport Lycra - 1 of 2

Order: 84350475 Item: 41531309

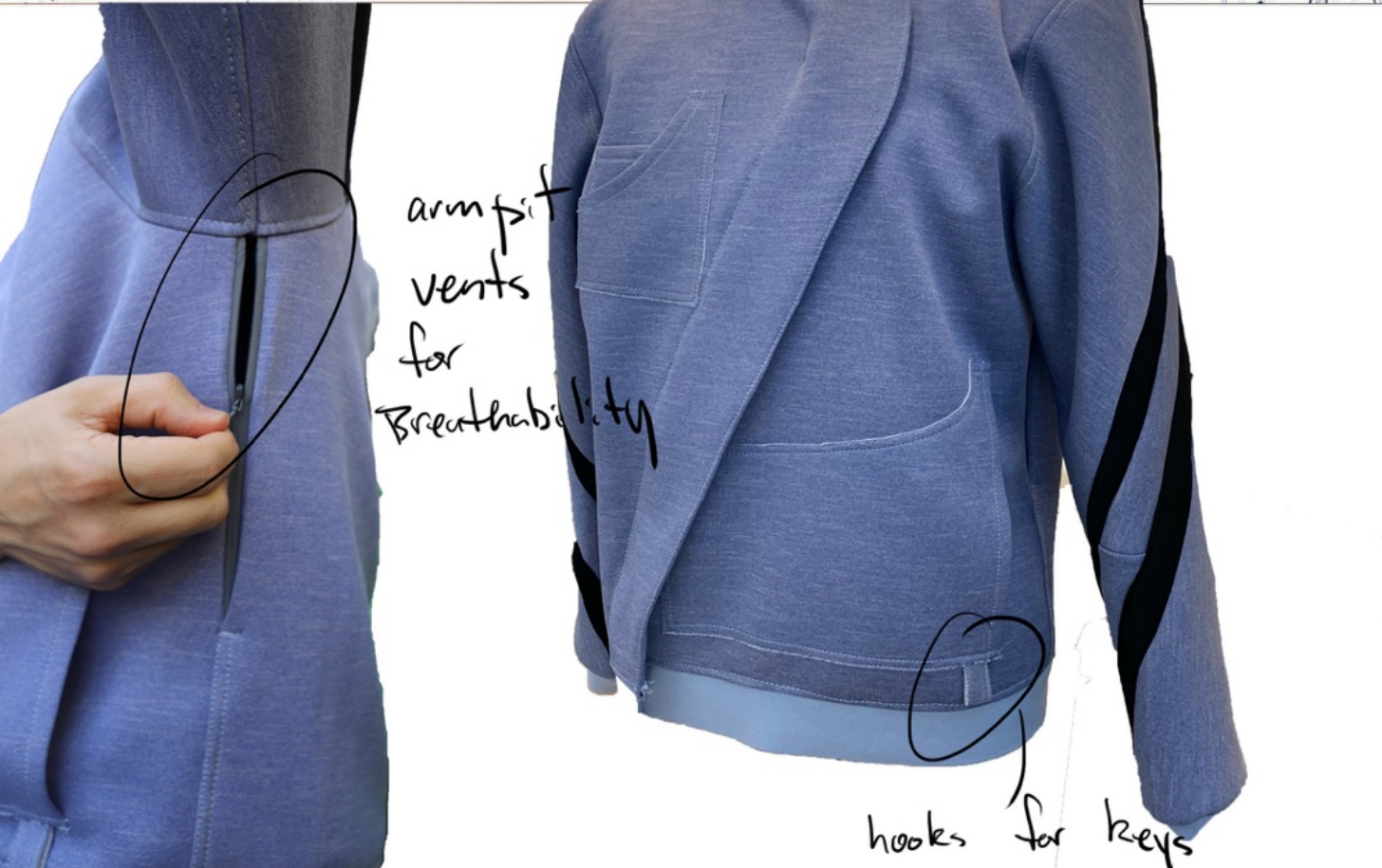
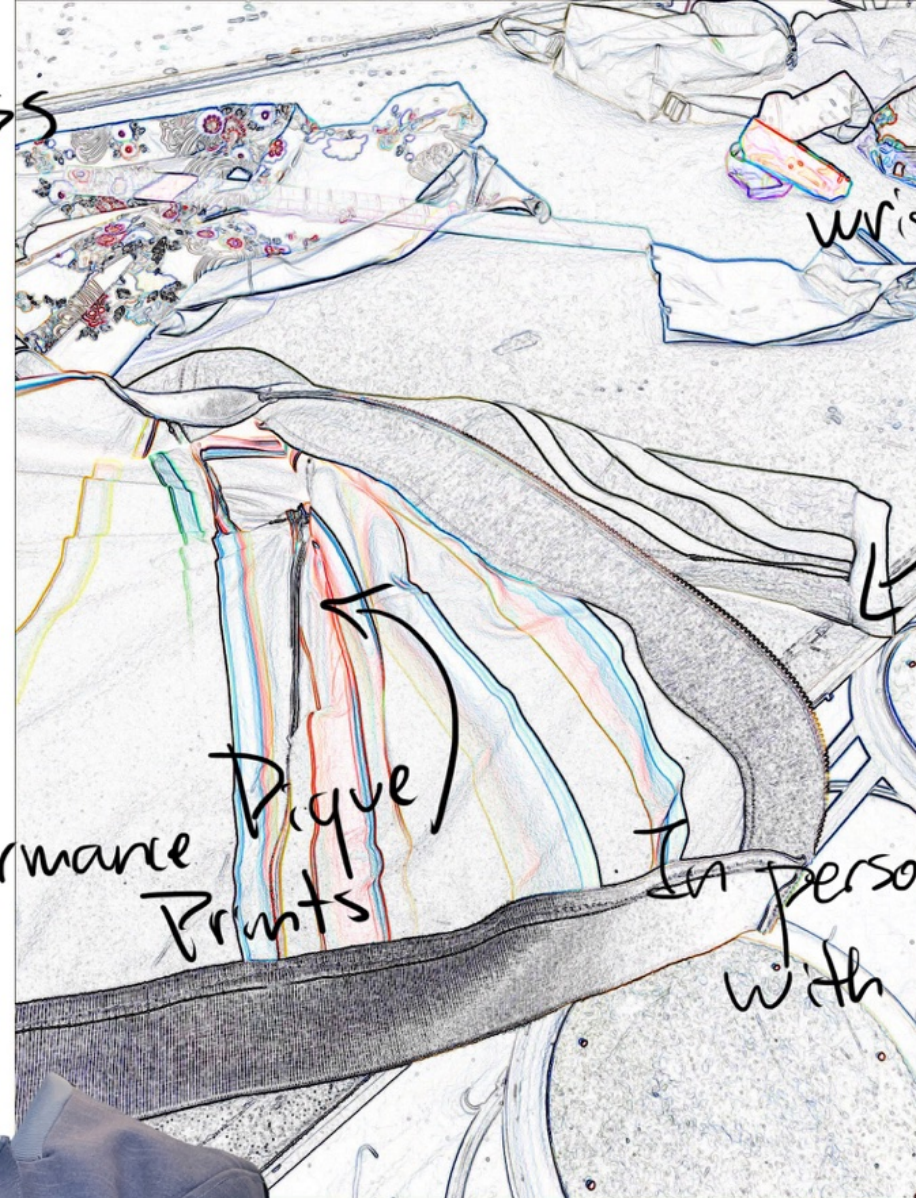
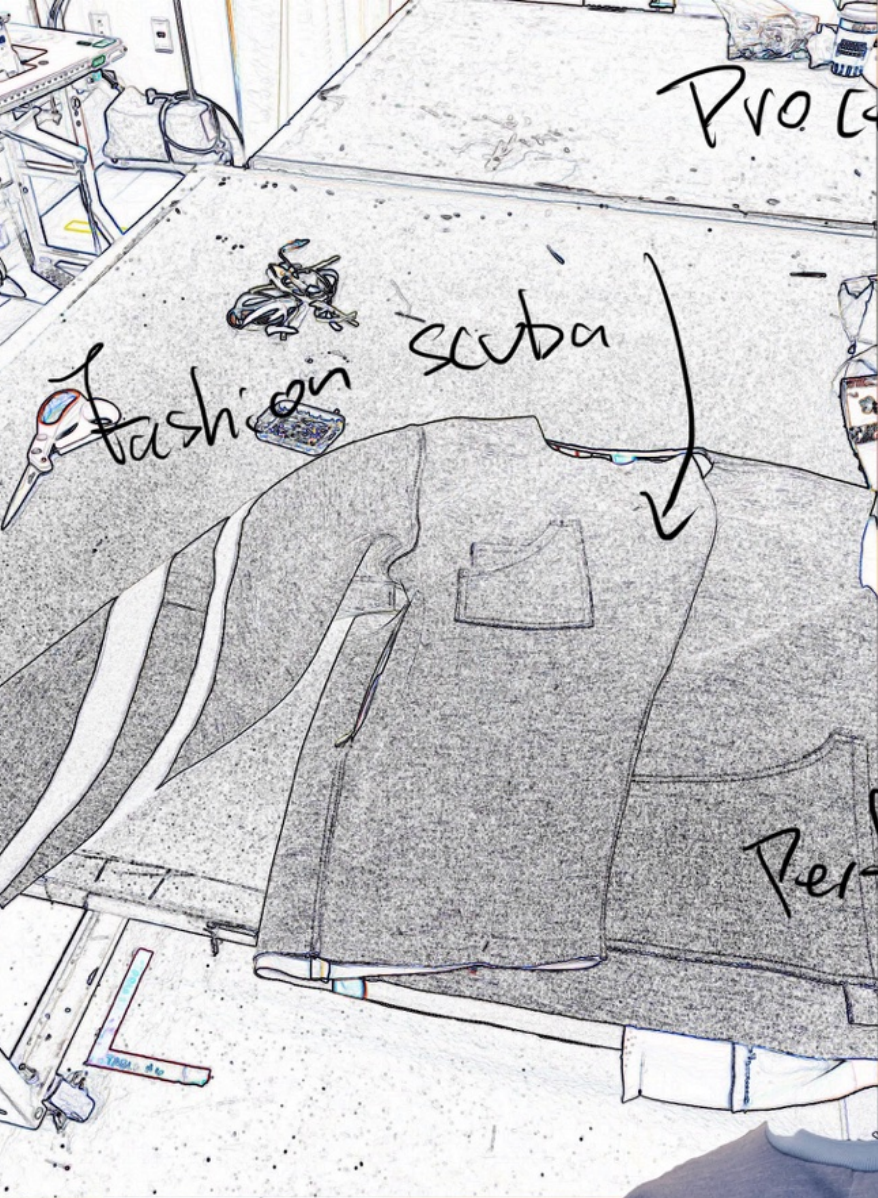
Job: 10704193\_003 - Design: 12839209 - ly

Designed by:  
denina0131  
Custom printed on  
Performance Piqu - 2 of 2

Order: 84350475 Item: 41531544

Job: 10703694\_020 - Design: 12839475 - pp

RENEE XIE  
@DA\_STUDIO31



RENEE XIE  
@DA\_STUDIO31



Rice & flaxseed  
for insert

Rice & flaxseed  
can retain  
cold & heat



Stitch lines for  
compact design

RENEE XIE  
@DA\_STUDIO31



side opening  
for inserts

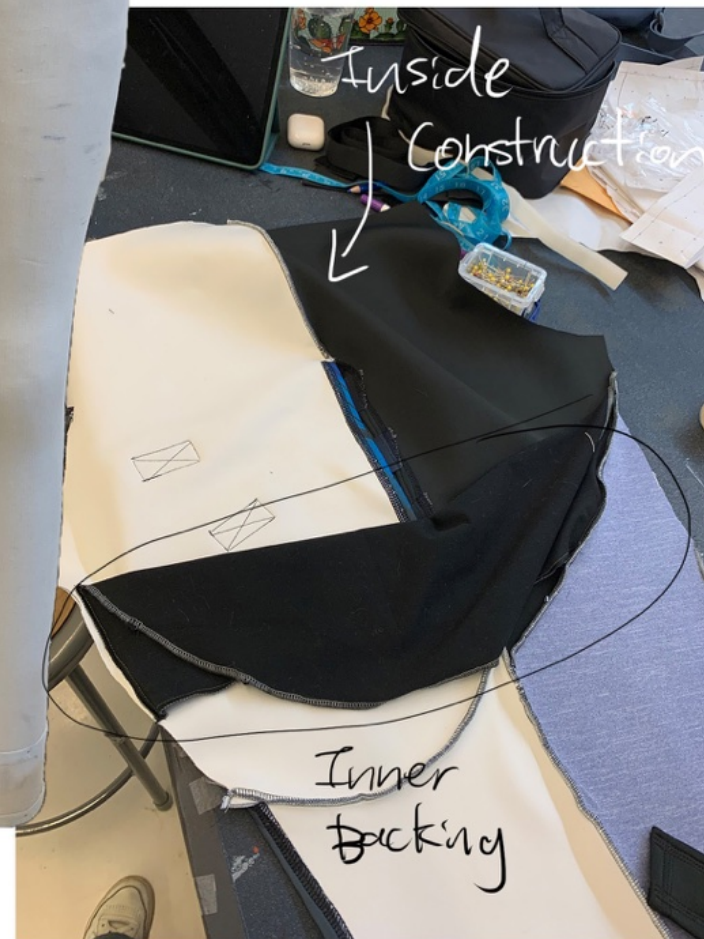
stitching  
Idea

3 pt.  
coverstitch

seat belt  
material

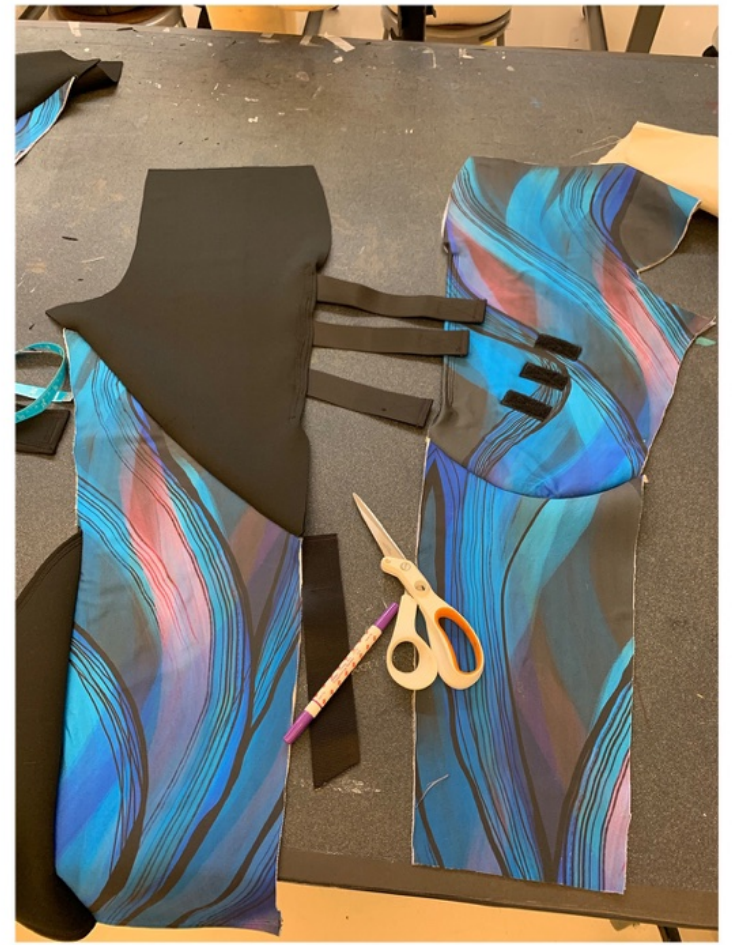


Fusing  
Sports Lycra  
+  
Fashion Scuba

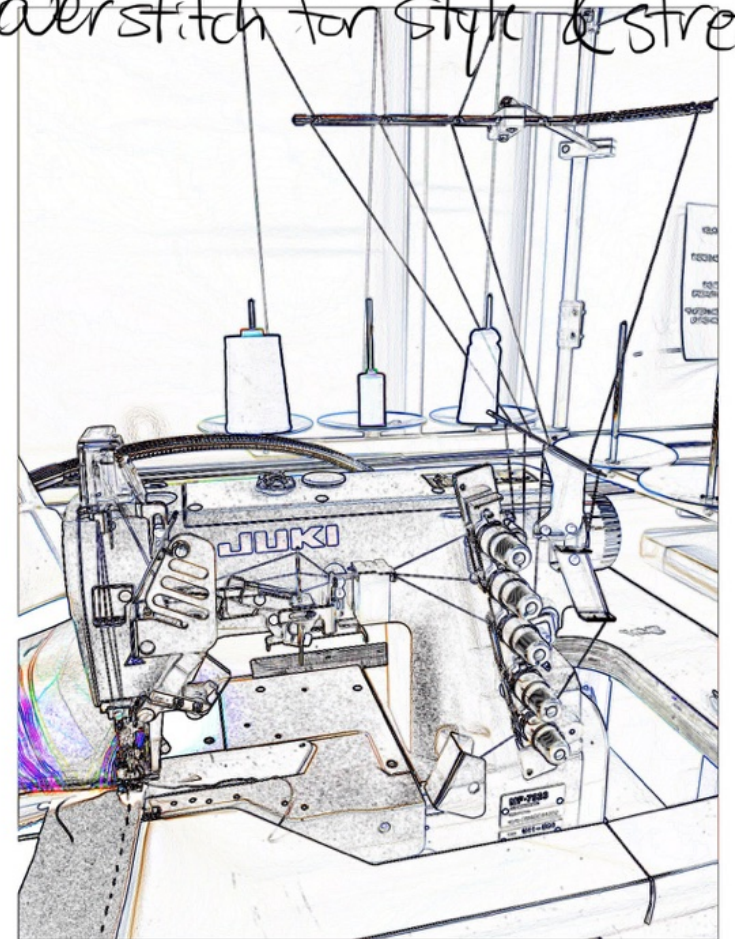


Inside  
Construction

Inner  
backing



Coverstitch for style & stretch





# COMPRESSION LEGGINGS FEATURE

ADJUSTABLE WAISTBAND  
PROVIDES ABDOMINAL  
COMPRESSION

SIDE OPENING FOR INSERTS  
THIGH POCKETING FOR HEAT/ICE  
THERAPY INSERTS

STRAPS FOR ADJUSTABLE COMPRESSION  
EASY SELF-ADJUSTABLE STRAPS TO CONTROL  
COMPRESSION STRENGTH

KNEE PANEL  
FOR EASE AND COMFORT WHEN  
SEATED OR IN MOTION

CALF OPENING FOR INSERTS  
CALF POCKETING FOR THERAPY  
INSERTS AND WRAP FOR MORE  
COMPRESSION ADJUSTABILITY

EACH COMPRESSION  
LEGGINGS COMES WITH  
4 THERAPY INSERTS

FASHION SCUBA  
STRETCH MATERIAL TO  
PROVIDE BREATHABILITY  
AND COMFORT

STRENGTHENED  
ANKEL WRAP  
TO PREVENT RIDEUP



RENEE XIE  
@DA\_STUDIO31

EASY FASTENING WITH VELCRO TO ADJUST DESIRED COMPRESSION LEVEL



RENEE XIE  
@DA\_STUDIO3I

INSERTS FOR HEAT/ICE THERAPY

## SIDE OPENING FOR CALF INSERTS



ADJUSTABLE IN SIZE AND TEMPERATURE



RENEE XIE  
@DA\_STUDIO3I



RENEE XIE  
@DA\_STUDIO31





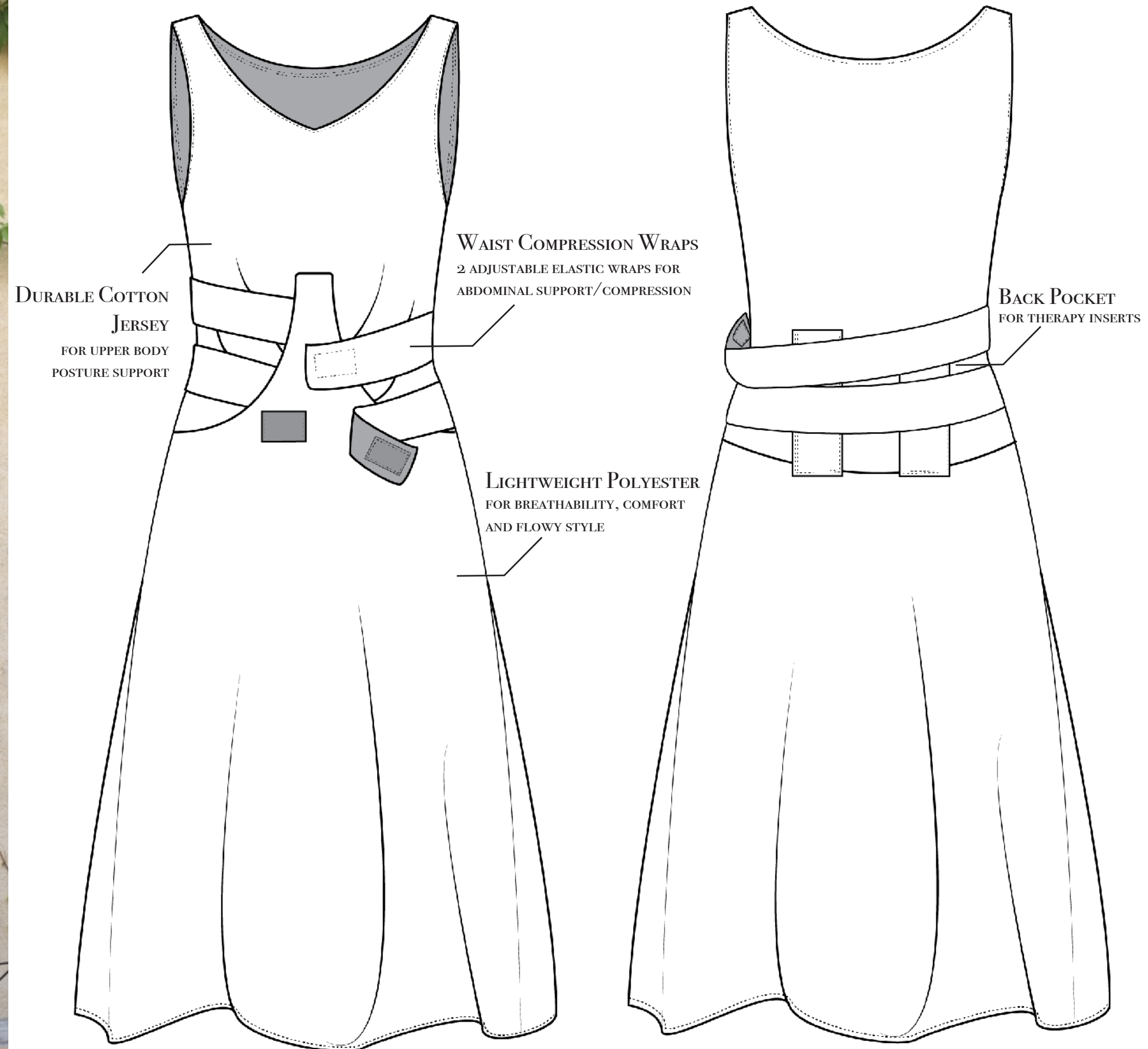
RENEE XIE  
@DA\_STUDIO3I



RENEE XIE  
@DA\_STUDIO31

EACH COMPRESSION DRESS  
COMES WITH 2 BACK  
THERAPY INSERTS

## COMPRESSION DRESS FEATURE





RENEE XIE  
@DA\_STUDIO31

## COMPRESSION RECOVERY LEGGINGS

ADJUSTABLE SIZING AND COMPRESSIONS STRENGTH. EASY TO USE AND PACK FOR TRAVELS AND RACES. MADE WITH INSERTS FOR HEAT AND ICE THERAPY.

PROMOTES BLOOD CIRCULATION AND INCREASE MUSCLE RECOVERY

## BREATHABLE SCUBA MATERIAL

PROVIDES STRETCH AND COMFORT WHILE PREVENTING USERS FROM GETTING OVER HEATED.

## FULL RANGE OF MOBILITY

LIGHTWEIGHT, FEELS LIKE LEGGINGS. CAN WEAR WITH OR WITHOUT INSERTS.

MADE WITH CLO 3D

RENEE XIE  
@DA\_STUDIO3I



MADE WITH CLO 3D



RENEE XIE  
@DA\_STUDIO3I



BREATHABLE & FAST DRYING JACKET  
MADE WITH BREATHABLE KNIT JERSEY AND LINED WITH  
PERFORMANCE PIQUE. KNIT JERSEY CREATE WARMTH AND  
PERFORMANCE PIQUE DRIES QUICKLY.

SNAPS FOR FAST CLOSURE  
FAST COVERAGE AND CLOSURE AFTER  
GETTING OUT OF THE POOL.

POCKETS  
DIFFERENT SIZED POCKETS FOR  
STORAGE.

SIDE UNDERARM  
OPENING  
FOR VENTILATION WHEN ATH-  
LETES GET TOO HOT.

FLEXIBILITY  
DUO FUNCTIONALITY FOR LAND  
TRAINING AND RECOVERY

RENEE XIE  
@DA\_STUDIO3I

MADE WITH CLO 3D





CLO 3D vs. PHYSICAL GARMENT



RENEE XIE  
@DA\_STUDIO3I

COMPRESSION RECOVERY DRESS  
GIVES BACK AND WAIST SUPPORT.  
ADJUSTABLE COMPRESSION STRENGTH  
WITH INSERTS FOR HEAT OR ICE  
THERAPY

ELASTIC  
THICK AND DURABLE ELASTIC  
FOR FLEXIBILITY AND EASY USE.

COTTON JERSEY  
THE DRESS ITSELF IS BREATHABLE  
AND LIGHTWEIGHT.

EVERYDAY USE  
STYLISH FOR EVERYDAY DRESS-  
ING AND RECOVERY AT THE SAME  
TIME.

RENEE XIE  
@DA\_STUDIO3I

MADE WITH CLO 3D



RENEE XIE  
@DA\_STUDIO3I



PHYSICAL GARMENT VS. CLO 3D